

The Society of Heating, Air-Conditioning and Sanitary Engineers of Japan



East Building of Nippon Life
Insurance Company Head Office



ABENO HARUKAS



Toranomon Hills



YKK80 Building



Unnan City Hall



Takenaka Corporation Higashi Kanto
Branch Office



Juntendo University Hospital,
Building B

Preface

The Society of Heating, Air-Conditioning and Sanitary Engineers of Japan (SHASE) is a major organization for heating, air-conditioning, and sanitary engineering in Japan with over a century of history and more than 15,000 members collaborating.

To realize a future sustainable society, we are offering Zero Energy Building (ZEB) solutions while achieving a high level of wellness, comfort and resilience.

SHASE set out its 21st century vision plus during its centenary as a "growth strategy and decarbonization solutions for environmental and equipment technology that supports the 21st century". We have started various activities based on our vision in academic and industrial fields to play a key role in realizing a sustainable and resilient society.

SHASE provides a platform to integrate proposals to revitalize academic and industrial fields concerning air-conditioning and sanitary engineering.



President
Professor Masayuki Otsuka

Mission

The mission of SHASE is to develop the science of mechanical service systems for buildings and environmental engineering, including heating, ventilation, air-conditioning, and sanitary engineering, through the following activities:

1	Education	Organizing symposia, technical meetings, training courses, and technical tours.
2	Publication	Journals, technical papers, research reports, handbooks, and others.
3	Research	Conducting, supporting, and promoting research and investigation.
4	Collaboration	Cooperating and collaborating with international societies.
5	Standards	Updates through SHASE-S (Standard), -M (Manual), -G (Guideline), -R (Technical Report).
6	Professional Certification	Establishing the qualifications for "Building Service Engineers" in Japan.
7	Awards	Recognizing contribution to the fields by giving prizes.

Number of Members

as of June 2020

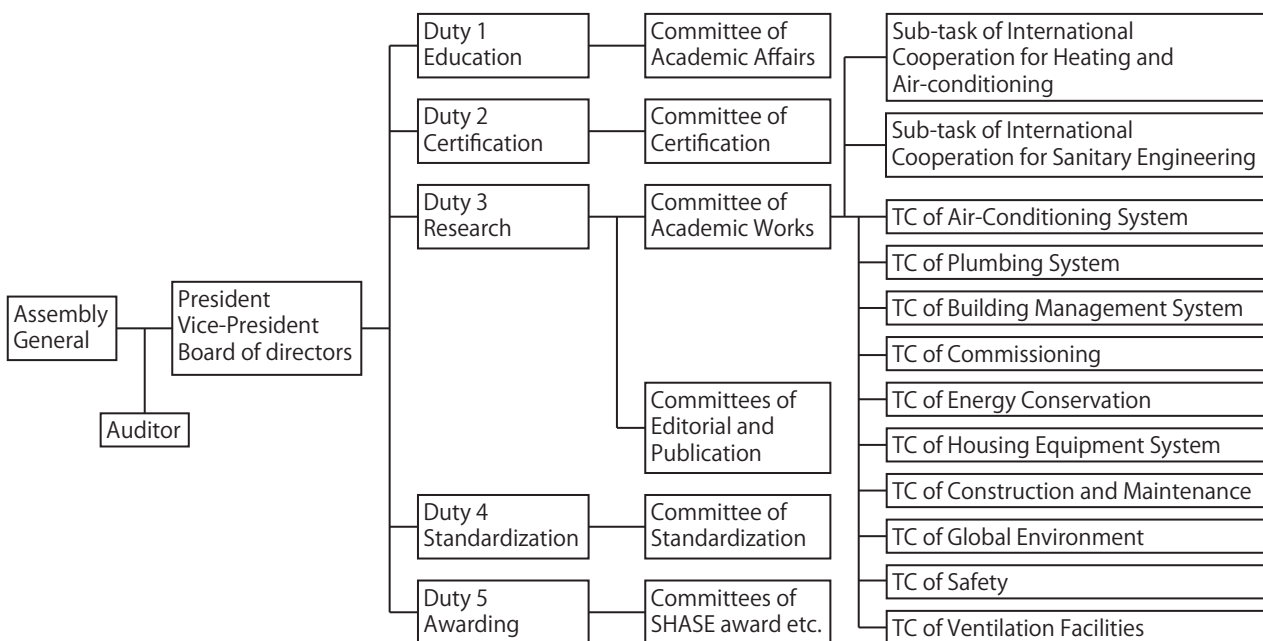
Individual						Company	Total
Regular	Honored	Special	Life	Student	Subtotal		
14 586	32	41	0	428	15 087	485	15 572

History

1917	The organization was established as the Heating and Refrigeration Association.
1921	It joined the Japan Federation of Engineering Societies.
1927	The organization was renamed as the Society of Domestic and Sanitary Engineering.
1955	The first annual meeting was held.
1962	The organization was renamed as the Society of Heating, Air-Conditioning and Sanitary Engineers of Japan (SHASE).
1963	SHASE's Awards system was introduced.
1975	SHASE joined the International Council for Research and Innovation in Building and Construction.
1976	SHASE transaction started.
1992	The first delegation to the ASHRAE winter meeting was organized. A delegation has been sent to the meeting every year.
2001	The International Honorary Member system was introduced.
2011	The midterm plan on SHASE's vision for the 21st century was reported.
2012	SHASE became a public interest incorporated association.
2017	100th anniversary

Organization

SHASE has more than 90 committees, such as the Technical Committees of Air-Conditioning System and Plumbing System. Their major activities are research and investigation, and they aim to equip SHASE members with knowledge and information on the said fields.



Organization chart of SHASE

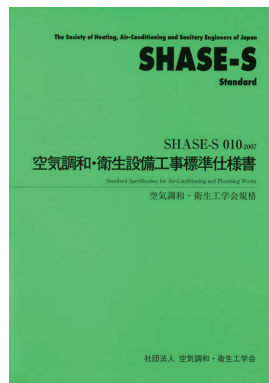
Publication



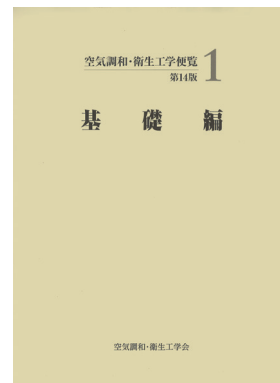
SHASE
Monthly Journal



SHASE Transaction
Peer-reviewed



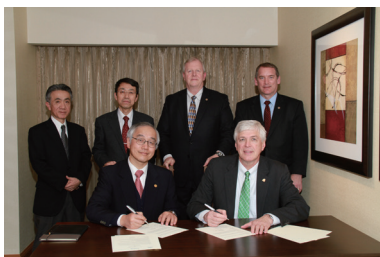
SHASE-S
Standard



Handbook

International Relations

- (1) SHASE has agreements of communication with 11 overseas organizations;
ASHRAE (US, 1963/2013) AIRAH (Australia, 1978) SAREK (Korea, 1992/2005)
SCANVAC (Scandinavia, 1994) CIBSE (UK, 1995) AICARR (Italy, 1995)
AIT (Taiwan, 2008) KIAEBS (Korea, 2008) CCHVAC (China, 2012)
REHVA (EU, 2012) ISHRAE (India, 2017)
- (2) SHASE established the "International Honorary Members Award" in 2001 for foreign researchers and engineers who contributed significantly toward the development of heating, air-conditioning and sanitary engineering in Japan. A total of 30 Honorary Members have been selected as of May 2018.
- (3) SHASE has been dispatching Study Groups since early 1990s for "ASHRAE Winter Meetings" and "CIB W062 Water Supply and Drainage for Buildings".



SHASE and ASHRAE agreement
Revised on January 29, 2013



International Exchange Program
for CIB W062 Symposium



With agreement organizations
on December 1, 2017

More Information

The Society of Heating, Air-Conditioning and Sanitary Engineers of Japan (SHASE)
Kagurazaka Plaza Building 4F, 4-8 Kagurazaka, Shinjuku-ku, Tokyo 162-0825, Japan
E-mail: handa@shase.or.jp
Phone +81-3-5206-3600, Fax +81-3-5206-3603
<http://www.shasej.org/>